

Foundries

High Performance Refractories



RESCO[®]
PRODUCTS, INC.

www.RescoProducts.com

Horizontal Channel Induction Furnace Application Guide

Horizontal Channel Furnace Reference Chart

Zone	Shaped Solutions	Monolithic Products	Mortar
Receiver		Vibrocast 60 Vibrocast 60-5SC PC	
Upper Case Working	Rescal 70D Rescal 80BP		Ref Patch X-13
Upper Case Backup	LW 26, LW 23 LI		Trowleze
Slag Line	Rescal 10CR Rescal 10CRSR		Ref Patch X-13
Lower Case Working	Rescal 90 XD-G Dura-Tab SC		Ref Patch X-13
Lower Case Backup	LW 26, Patriot HF		Trowleze
Pour Spout	Uniform Precast	Vibrocast 70-15 SCPC	
Repairs	Rescoram 70 Blue, Rescoram 7CR, Helspot Plastic Rescobond 3000G, Quikturn 60G		

DURATAB

DURATAB SC

RESCAL 70D

RESCAL 90XD

PATRIOT HF

CORLINE

KRICON

RESCORAM

RESCOBOND

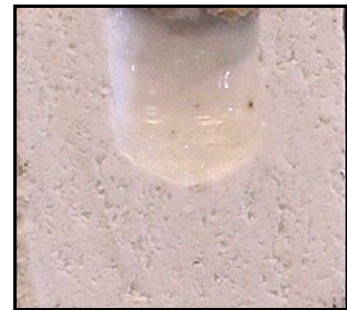
VIBROCAST

QUIKTURN

R-MAX

HELSPOT

LADLELOCK



Channel Induction Furnace

Application Guide

DURATAB

DURATAB SC

RESCAL 70D

RESCAL 90XD

PATRIOT HF

CORLINE

KRICON

RESCORAM

RESCOBOND

VIBROCAST

QUIKTURN

R-MAX

HELSPOT

LADLELOCK

Channel Induction Furnace Reference Chart

Zone	Shaped Solutions	Monolithic Products	Repair/ Maintenance
Receiver		Vibrocast 60 Vibrocast 60-5SC PC	Rescoram 70 Blue
Cover		Rescocal 110C Vibrocast 2800	Quikturn 60G
Upper Case Working	Rescal 70D Rescal 90 XDG Rescal10CR	Vibrocast 70-15 SCPC Kricon 34-5	Rescoram 7CR Helspot Plastic Rescobond 3000G
Upper Case Backup	Patriot HF LW 26, LW 23 LI	Rescocal 3A Quiklite 3-DS	
Pour Spout	Uniform Precast Shapes	Vibrocast 70-15 SCPC	Helspot Plastic Rescoram 7CR
Repairs	Rescoram 70 Blue, Rescoram 7CR, Helspot Plastic Rescobond 3000G, Quikturn 60G		



Cupola Furnace

Application Guide

Cupola Lining Reference Chart		
Zone	Shaped Solutions	Monolithic Products
Charge Ring	Uniform Precast Shapes	
Upper Stack	Patriot, Patriot HF	Progun 26LI, Quikturn 45G
Preheat Zone	Patriot HF, Rescal 70D, Alumex P-85HS	Progun LC 50G Progun LC 60G
Melt Zone	Rescal 90 XD-G, Dura-Tab SC	Vibrocast 56SC EZ Cubed 56SCPC, Progun LC 56SCG
Off-Takes		EZ Cubed 2700 Progun 26LI
Windbox		Rescicast 3-20R Rescicast 3-35
Safety Tuyeres		Rescoram 70 SC
Front Spout		Rescoram 70 SC Helspot Plastic
Well		Rescoram 70 SC Helspot Plastic
Taphole	Uniform Precast Shapes	Rescoram 70 SC Helspot Plastic

DURATAB

DURATAB SC

RESCAL 70D

RESCAL 90XD

PATRIOT HF

CORLINE

KRICON

RESCORAM

RESCOBOND

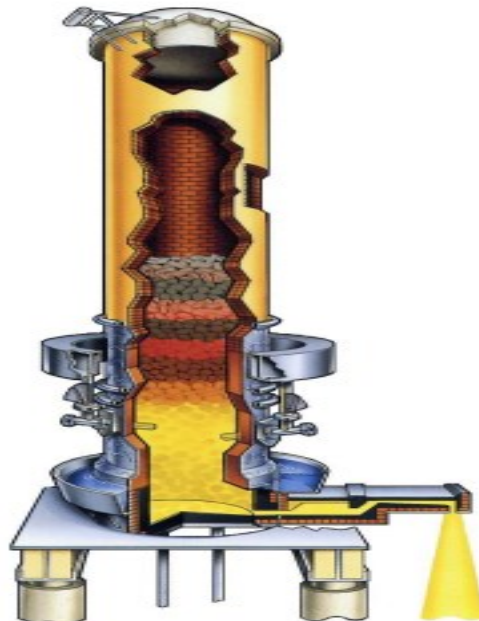
VIBROCAST

QUIKTURN

R-MAX

HELSPOT

LADLELOCK



Product Descriptions

DURATAB

DURATAB SC

RESCAL 70D

RESCAL 90XD

PATRIOT HF

CORLINE

KRICON

RESCORAM

RESCOBOND

VIBROCAST

QUIKTURN

R-MAX

HELSPOT

LADLELOCK

Brick

Alumex P-85HS	Phosphate-bonded, high alumina brick exhibiting high strengths, great abrasion resistance, and excellent thermal shock resistance.
Dura-Tab SC	Burned, alumina brick that combines silicon carbide with high purity alumina aggregate to produce a refractory possessing exceptional resistance to furnace slags in induction furnace applications.
LW 26	2600°F rated insulating firebrick. Offers good insulating characteristics and good strength.
LW 23 LI	2300°F rated, low iron, insulating firebrick.
Patriot	Burned, superduty fireclay brick with high refractoriness, volume stability and low thermal conductivity.
Patriot HF	High fired, superduty brick. High firing temperature provides excellent resistance to carbon monoxide disintegration, low porosity and good hot load bearing characteristics.
Rescal 10CR	Burned, Alumina-chrome brick with solid solution bonding. Ideally suited for slag line applications in channel induction furnaces.
Rescal 10CRSR	Thermal shock resistant, alumina-chrome brick.
Rescal 70D	Burned, 70% alumina brick with good corrosion and thermal shock resistance.
Rescal 80 BP	Burned, phosphate-bonded, 80% alumina brick. Exhibits high strength, good abrasion resistance and low apparent porosity. Ideal choice for molten aluminum contact.
Rescal 90 XD-G	90% alumina brick bonded with a mullite matrix. Exhibits high hot strength, low porosity and high resistance to slag attack.
Seneca 60 P	Phosphate-bonded, mullite-based brick with excellent alkali resistance.

Refractory Mortars, Washes and Patch Mixes

Adacor 70	Wet, air-setting, high alumina mortar. Available in troweling and dipping consistencies.
Helspot Ladle Wash	Graphite-based, finely ground refractory material designed as a final wash for ladle linings or any other metal or slag contact applications in ferrous foundries. Shipped dry.
Lo-Set	Dry, air-setting, 40% Alumina mortar. 3000°F service temperature limit.
P-7 Cement	Graphite-containing mix shipped wet in a ready-to-use form. Use for ladle patching or coating.
Pacocast 24T	40% alumina, low iron castable designed to be more plastic than other conventional castables. Can be use to patch linings and may be installed by troweling or plastering.
Ref Patch X-13	Wet, chemically bonded, High alumina coating mix. Used in Channel Furnace brick linings.
Trowleze	Wet, air-setting, 40% Alumina mortar with a 3000°F service temperature limit. Available in troweling or dipping consistencies.

Coreless Induction Furnace

Application Guide

Coreless Induction Furnace Reference Chart

DURATAB

DURATAB SC

RESCAL 70D

RESCAL 90XD

PATRIOT HF

CORLINE

KRICON

RESCORAM

RESCOBOND

VIBROCAST

QUIKTURN

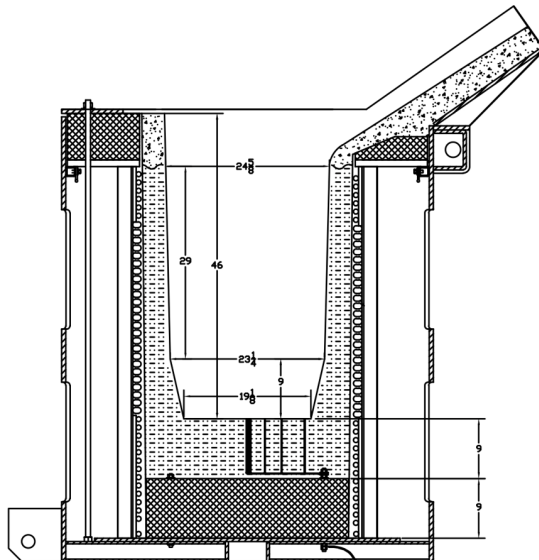
R-MAX

HELSPOT

LADLELOCK

Application Area	Castable Solutions	Plastic and Ramming Solutions
Covers/Lids	Rescocast 110C, Vibrocast 2800	
Top Cap Iron Alloys	Vibrocast 70M, Kricon 32-70, Quikturn 32-70 PC	Rescoram 70 Blue
Steel Alloys	Vibrocast 85 ULM, Unicrete 85 LC, Kricon 34-5	Rescoram 85 Rescoram 7CR
Spout	Quikturn 32-70 PC Vibrocast 85 ULM Kricon 34-5	Rescoram 70 Blue Rescoram 85 Rescoram 7CR
Support Rings	Quikturn 60SF, Rescocast 15	

Unique Solutions	
Uniform Shapes	Precast shapes are available in several formulations for Spouts or other areas.
Spinel Containing	Vibrocast ASC-8LT (C-C) is an alumina-spinel forming composition for demanding areas in Steel contact applications.



Foundry Ladles

Application Guide

DURATAB

DURATAB SC

RESCAL 70D

RESCAL 90XD

PATRIOT HF

CORLINE

KRICON

RESCORAM

RESCOBOND

VIBROCAST

QUIKTURN

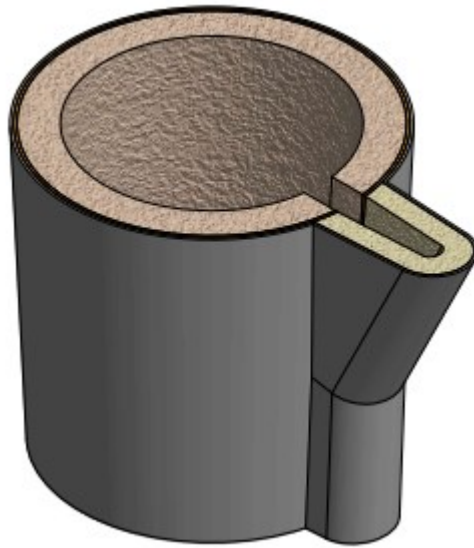
R-MAX

HELSPOT

LADLELOCK

Foundry Ladle Reference Chart

Metals	Brick Linings	Monolithic Linings	Ladle Wash/ Maintenance
Iron	Patriot HF, Rescal 70D	Vibrocast 2800, Vibrocast 50 PC EZ Cubed 2700	Lo-Set, Corline Rescoram 70 Blue
Steel	Rescal 70D Rescal 80 BP	EZ Cubed 2800, Vibrocast 3000, Quikturn 32-70 PC	Helspot Ladle Wash, P-7 Cement, Rescoram 85
Non-Ferrous	Seneca 60P	Furnacubed 40, Quikturn 45 PCA, Quikturn 65 PCA, Furnacubed 65	Pacocast 24T, Corline
Precast shapes are available.			



QuikTurn
It's about time

Product Descriptions

DURATAB

DURATAB SC

RESCAL 70D

RESCAL 90XD

PATRIOT HF

CORLINE

KRICON

RESCORAM

RESCOBOND

VIBROCAST

QUIKTURN

R-MAX

HELSPOT

LADLELOCK

Monolithics

Corline	High Alumina, chemically-bonded, erosion resistant refractory. Fine-grained, putty type consistency.
EZ Cubed 2700	Fireclay-based, conventional cement-bonded castable that can be installed by casting, pumping, shotcreting or at a self-leveling consistency. Contains 45% Alumina and is rated to 2700°F.
EZ Cubed 2800	Fireclay-based, conventional cement-bonded castable that can be installed by casting, pumping, shotcreting or at a self-leveling consistency. Contains 45% Alumina and is rated to 2800°F.
Furnacubed 40	40% Alumina, low-cement castable with excellent resistance to alkalis. Can be installed by casting, pumping and shotcreting.
Furnacubed 65	65% Alumina, low-cement castable with excellent resistance to alkalis. Non-Can be installed by casting, pumping and shotcreting.
Kricon 32-70	70% Alumina, low iron, low-cement castable with a temperature limit of 3200°F. Vibration cast only.
Progun 26LI	High-strength, conventional cement gunning mix. Fireclay based and rated to 2600°F.
Progun LC 28GM	Low-cement, fireclay based gunning mix rated to 2800°F.
Progun LC 60G	Mullite-based, low-cement gunning mix with excellent alkali resistance. Rated to 3100°F.
Quieturn 32-70 PC	70% Alumina, low-cement castable. May be cast, pumped or shotcreted. Rated to 3200°F, it may be heated without ramp-and-hold schedules after the final set.
Quieturn 45G	Ultra-low cement, fireclay-based, gunning mix rated to 3000°F. After final set, may be heated without ramp-and-hold type schedules.
Quieturn 60G	Mullite-based, low cement, 60% Alumina, conventional gunning mix. Rated to 3100°F, it may be heated without ramp-and-hold schedules after set.
Quieturn 60SF	60% alumina, low-cement, self-flowing castable. May be heated without ramp-and-hold schedules after final set.
Quieturn 65 PCA	Aluminum-resistant, 60% alumina, low-cement castable that can be cast, pumped or shotcreted. Rated to 2000°F for aluminum contact, it may be heated without ramp-and-hold schedules after the final set.
Rescobond 3000G	Chemically-bonded, air-setting, single component gunning mix. Predampening is not required.
Rescicast 15	Hydraulic-setting, fireclay-based, general duty castable. Moderate resistance to abrasion with medium insulation values. Multiple installation options include casting, gunning and troweling.
Rescoram 70 Blue	Mullite-based, phosphate-bonded plastic material. Develops high strength at lower temperatures.
Rescoram 85	High alumina, phosphate-bonded plastic with a service temperature limit of 3000°F.
Vibrocast 50PC	Low-cement, 45% alumina castable that may be installed by casting, pumping or shotcreting. Excellent resistance to alkalis. Rated to 3000°F.
Vibrocast 60PC	Mullite-based, low-cement, 60% alumina castable. Rated to 3100°F, it may be installed by casting, pumping or shotcreting.

Product Descriptions

DURATAB

DURATAB SC

RESCAL 70D

RESCAL 90XD

PATRIOT HF

CORLINE

KRICON

RESCORAM

RESCOBOND

VIBROCAST

QUIKTURN

R-MAX

HELSPOT

LADLELOCK

Monolithics

Vibrocast 70M	Economical, 70% alumina, low-cement castable rated to 3200°F. Vibration cast only.
Vibrocast 2800	Economical, low-cement castable rated to 2800°F. 40% alumina material for vibration cast installations.
Vibrocast 3000	45% alumina, low-cement castable rated to 3000°F. Vibration cast only.
Vibrocast 85 ULM	Low-cement, 80% alumina, vibration castable rated to 3200°F.
Vibrocast ASC-8LT (C-C)	High purity, low cement, alumina-spinel castable designed for maximum resistance to molten steel and slag. Vibration cast only.

SiC and Chromic Oxide Containing Monolithics

EZ Cubed 56 SCPC	Low-cement, Silicon Carbide-based castable that can be installed by casting, pumping or shotcreting. Contains approximately 56% Silicon Carbide.
Helspot Plastic	Graphite-based plastic with special bonding agent. High resistance to metal and slag penetration.
Kricon 34-5	Low-cement, tabular alumina-based castable with 5% chromia addition. Ideal for high wear areas attacked by slags. Best installed by vibration casting.
Progun LC 56SCG	Silicon carbide-based gunning mix that uses low cement binder technology.
Rescoram 7CR	High alumina, phosphate-bonded plastic with 7% chromic oxide.
Rescoram 70 SC	Silicon carbide-based, phosphate-bonded plastic.
Vibrocast 56SC	Silicon carbide-based, low cement castable. Best installed by vibration casting.
Vibrocast 60-5SC PC	Mullite-based, low cement castable with 5% Silicon carbide addition. May be installed by casting, pumping or shotcreting. Rated to 3100°F.
Vibrocast 70-15 SCPC	Pumpable, low-cement, 70% Alumina castable that contains 15% silicon carbide. Designed to provide low porosity and corrosion and erosion resistance in metal casting applications.

Lightweight Monolithics

Quiklite 3-DS	2400°F insulating castable. May be cast or gunned. Density 60 to 75 pcf depending on installation method. Contains a dust suppressant. May be heated without holds after initial set.
Rescocast 3-20R	2000°F insulating castable. May be cast or gunned. Density 20 to 35 pcf depending on installation method.
Rescocast 3-35	2000°F insulating castable. May be cast or gunned. Density 35 to 45 pcf depending on installation method.

Resco Products Locations

DURATAB

DURATAB SC

RESCAL 70D

RESCAL 90XD

PATRIOT HF

KRICON

RESCORAM

RESCOBOND

VIBROCAST

QUIKTURN

HELSPOT

LADLELOCK



★ Pittsburgh, PA Phone: 888-283-5505 Fax: 412-494-4571	◆ East Canton, OH Phone: 330-488-1226 Fax: 330-488-6042	◆ New Castle, PA Phone: 724-652-6668 Fax: 724-652-6664	◆ Tarentum, PA Phone: 724-224-8800 Fax: 724-224-3353
◆ Santa Fe Springs, CA Phone: 562-802-2463 Fax: 562-802-0315	◆ Moulton, AL Phone: 256-974-3731 Fax: 256-974-5880	◆ Hammond, IN Phone: 219-844-7830 Fax: 219-844-7246	◆ Greensboro, NC Phone: 336-854-5916 Fax: 336-855-5979
◆ Oak Hill, OH Phone: 740-682-7794 Fax: 740-682-6438	◆ Hillsborough, NC Phone: 919-732-3981 Fax: 919-732-9414	◆ Canada Customer Service Phone: 450-691-2933 Fax: 450-691-2966	◆ Newbold, UK Phone: 44 1530 222694

Founded in 1946, Resco has served its markets with specialized products ever since, initially, with the refining industry and later in the steel industry. Innovations have been key to Resco's long success, including AA-22 and the original patent on semi-universal ladle brick.

Recent acquisitions have diversified Resco into many new refractory markets. The addition of National's product lines allows Resco to offer a comprehensive range of products, including dolomite brick.

One Robinson Plaza
 6600 Steubenville Pike #300
 Pittsburgh, PA 15205

